

**HOLTOP**

**FRESH AIR FOR YOUR LIFE**

**HOLTOP**

Beijing Holtop Air Conditioning Co., Ltd.

Factory address : No. 5 Yard, 7th Guanggu Street, Badaling Economic Development Zone, Yanqing District, Beijing, China

International marketing center

Room 2101, Headquarter Center No. 25, Tian An Hi-Tech Ecological Park, No. 555 Panyu Ave, Guangzhou, China

Tel: 86-20-39388201-8023

Skype: susanwoo08

Website: www.holtop.com

E-mail: info@holtop.com



**ECO-SMART PRO PLUS**

Energy Recovery Ventilators



\* Data is subject to changes without notification due to product improvement





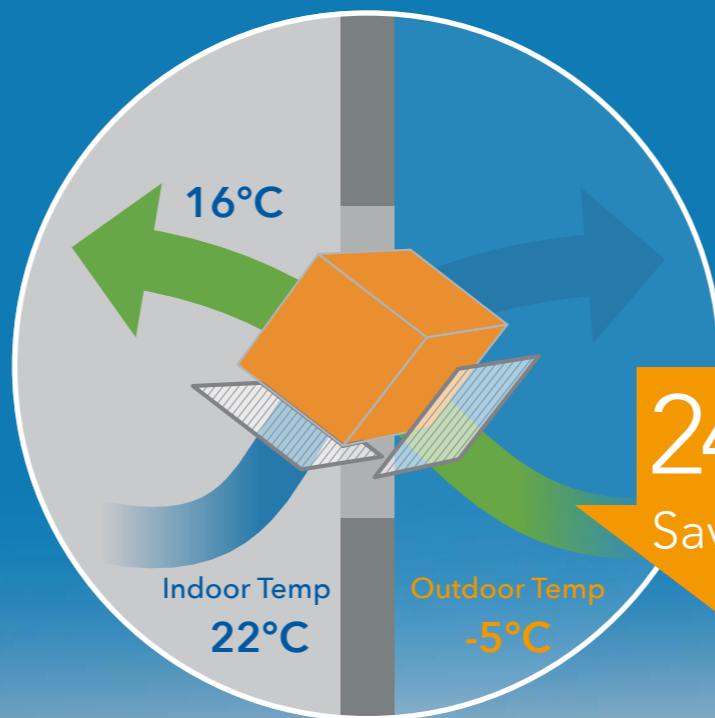
**Night Time Free Cooling**

Supplies cool air during nighttime to reduce cooling load



**Timer Operation**

ON/OFF timer can be set by users for automatic control to minimize the unnecessary operation



**Comfort Air + Energy Saving**

Compare to natural ventilation

High efficiency heat exchanger recover wasted energy while ventilating.



**CO<sub>2</sub> Operation**

Controls the fan speed automatically according to CO<sub>2</sub> level



**Seasonal Auto Operation**

Automatically changes operation mode based on the weather condition by sensing different temperature.

**ERV saves energy **Max.39%** compare to natural ventilation**

FRESH AIR IS ESSENTIAL TO IMPROVE BUILDING AIR QUALITY.  
WE IMPROVE THE QUALITY OF AIR,  
SO YOU CAN ENJOY THE QUALITY OF LIFE.



## Model Descriptions



- 1 ECO-SMART energy recovery ventilator
- 2 Installation type, D for suspended type
- 3 Rated airflow (m<sup>3</sup>/h), times 100
- 4 Washable primary filter
- 5 C is for black cool intelligent control

## ECO-SMART

Energy Recovery Ventilators

XHBQ-D2THC, XHBQ-D3THC, XHBQ-D4THC



AC motor



3 speeds



Physical filtering



Energy recovery



Silent operation



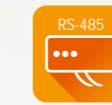
Energy saving



Smart control



Filter alarm



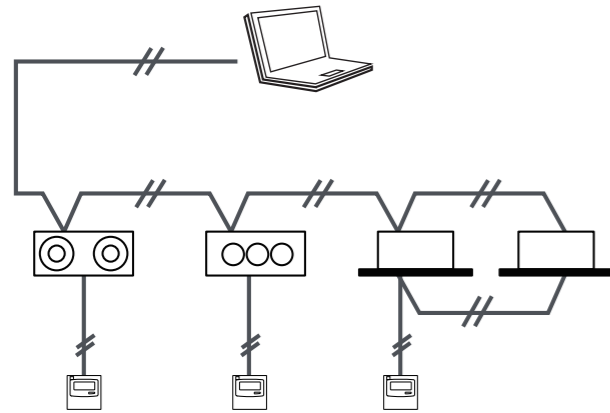
Central control



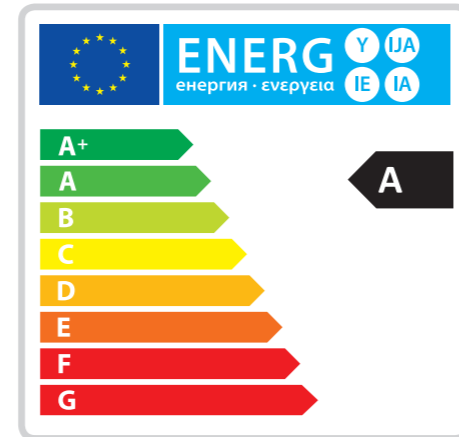
IAQ monitor



**Linkage with External A/C System or BMS Control**



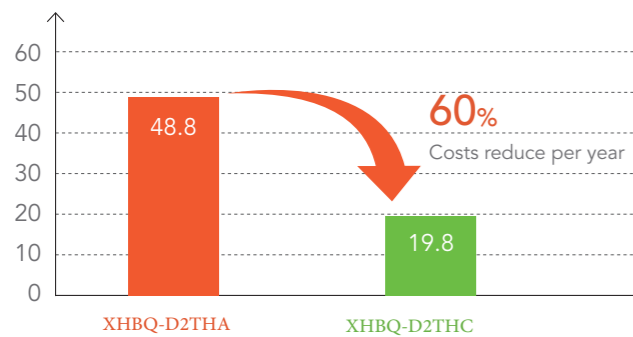
**Energy Efficiency Class of A**  
(According to EU NO. 1254/2014)



**Higher Energy Efficiency and Ecology by Powerful Motors**

Full series Eco Smart energy recovery ventilator are built with higher efficiency brushless DC motors, power consumption is reduced by up to 70%, resulting in significant energy saving. VSD control is suitable for most of the projects air volume and ESP requirement.

Running costs comparison of Eco-vent pro ERV and Eco-smart pro ERV

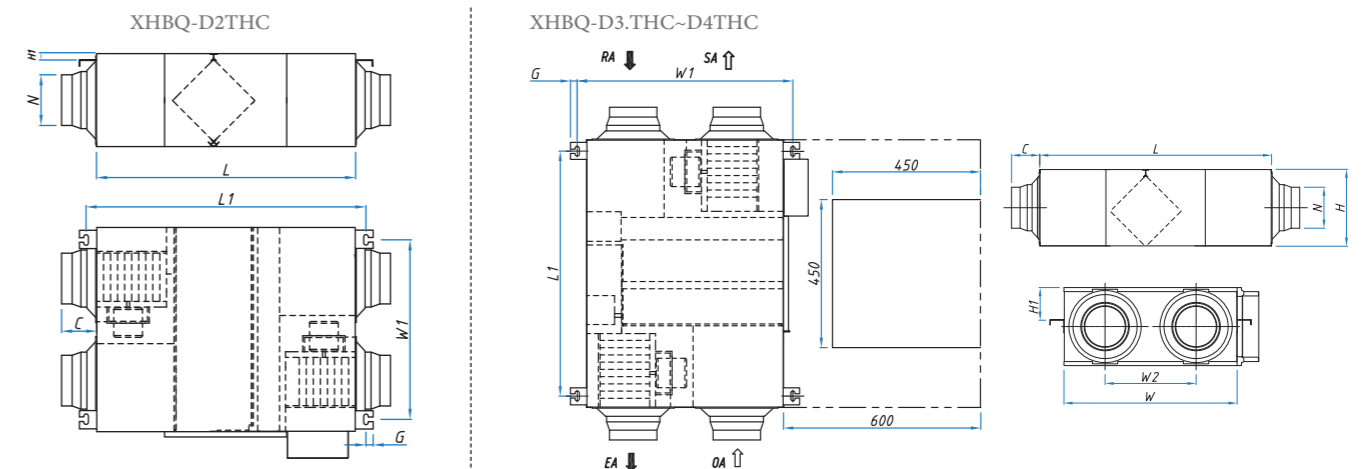


Location: Beijing  
 Airflow: 250 m<sup>3</sup>/h  
 Summer: 24h/day x 122days = 2928h (Jun. To Sep.)  
 Winter: 24h/day x 120days = 2880h (Nov. To Mar.)  
 Electric charge: 0.08 USD/Kw.h

**Specifications**

Model	Airflow (m <sup>3</sup> /h)	External pressure (Pa)	Enthalpy Eff.(%)		Temp. Eff. (%)	Noise dB(A)	Input power (W)	Volt. (V)	N. W. (Kg)
			Summer	Winter					
XHBQ-D2THC	200	75	55-60	59-63	70-75	25-31.5	105	220-240	23
XHBQ-D3THC	300	85	57-62	61-65	68-73	27-34.5	117	220-240	25
XHBQ-D4THC	400	88	57-62	60-65	69-74	31-37.5	150	220-240	31

**Dimensions**



Remarks:  
 1.It must have a access for the maintenance of filters, heat exchangers, fans, motors, and bypass damper.  
 2.Please clean the filters and heat exchangers 2 to 4 times every year.

Model	L	L1	W	W1	W2	H	H1	C	G	N
XHBQ-D2THC	736	795	580	510	290	264	20	100	20.5	Ø144
XHBQ-D3THC	814	745	599	657	315	270	111	100	20.5	Ø144
XHBQ-D4THC	814	745	804	860	480	270	111	100	20.5	Ø144





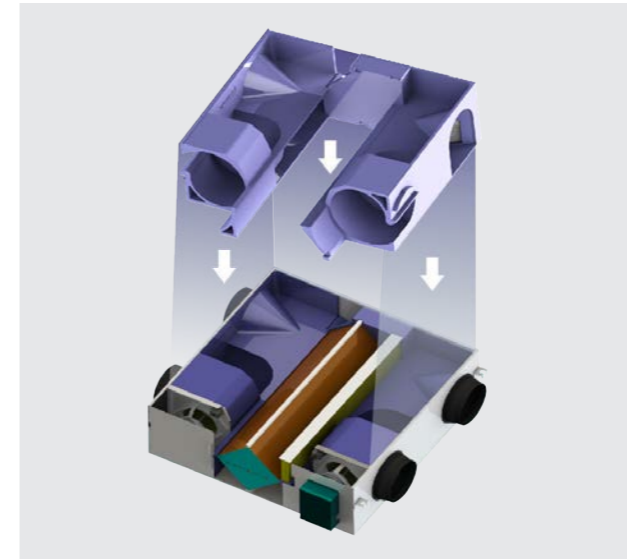
XHBQ-D6THC~D13THC

- |               |                 |                    |                  |                 |
|---------------|-----------------|--------------------|------------------|-----------------|
|               |                 |                    |                  |                 |
| AC motor      | 3 speeds        | Physical filtering | Energy recovery  | EPS structure   |
|               |                 |                    |                  |                 |
| Durable       | Good insulation | Easy access        | Silent operation | Bypass function |
|               |                 |                    |                  |                 |
| Energy saving | Smart control   | Filter alarm       | Central control  | IAQ monitor     |



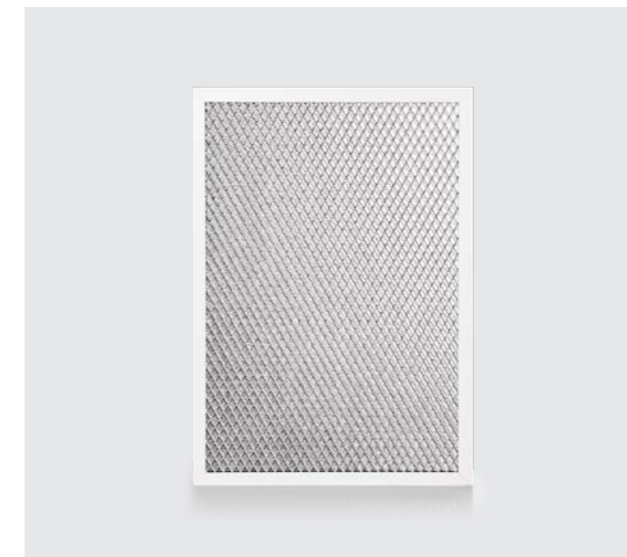
## Good Thermal Insulation

The whole series are intergated with EPS structure, effectively preventing condensation, and improving thermal insulation and saving energy consumption.



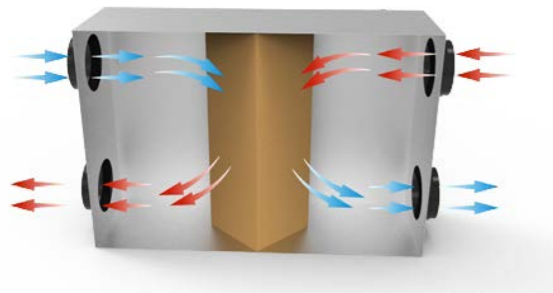
## New Primary Filter

New primary filter is made of aluminium alloy frame and rubber filtration materials with nice appearance and longer service life.



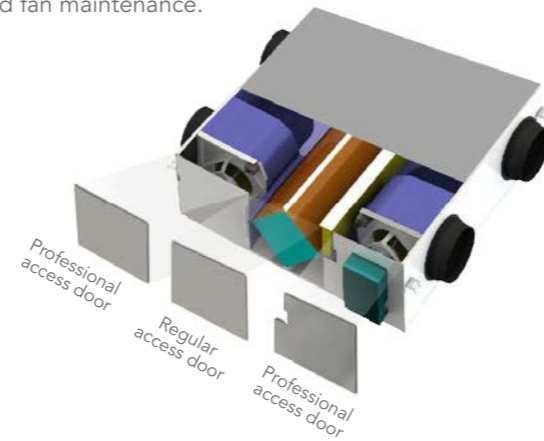
## New Compact Structure

New airflow channels are to increase heat exchange surface and improve energy recovery efficiency.



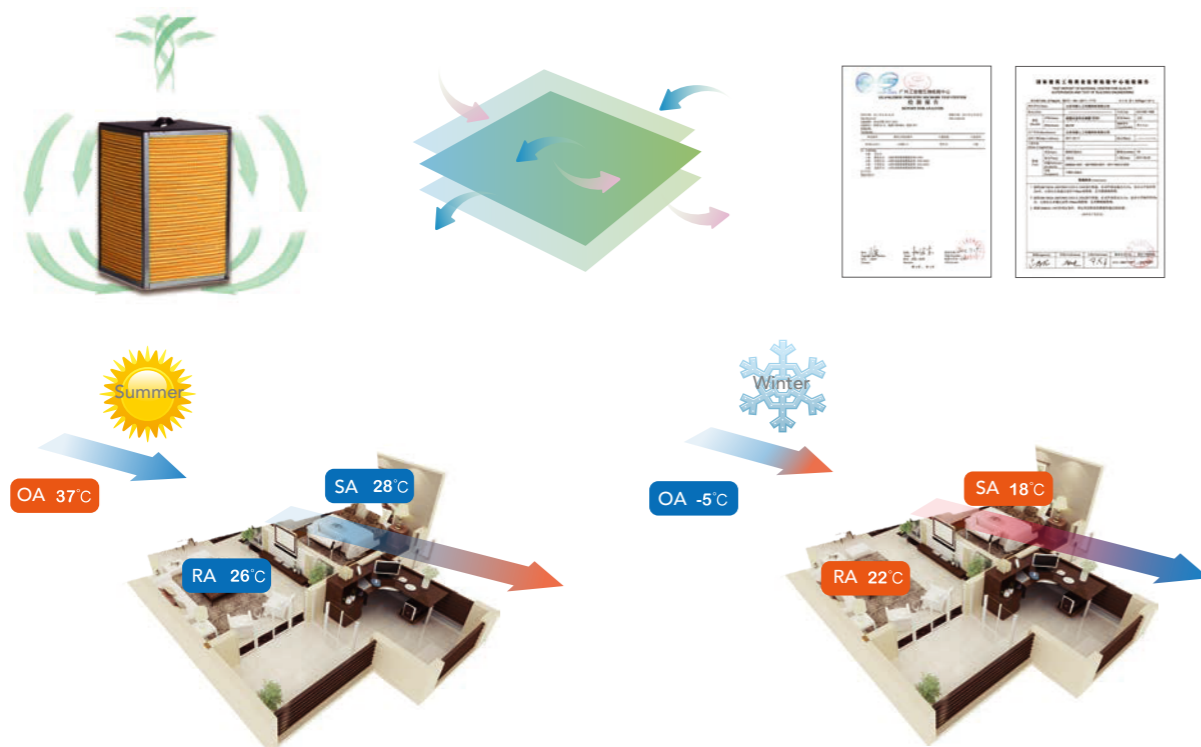
## Easy Maintenance

- Regular access door is for maintenance of primary filter, PM2.5 filter and heat exchangers.
- Increase two professional access doors for the control and fan maintenance.



## Higher Efficiency with 3rd Generation Enthalpy Exchanger

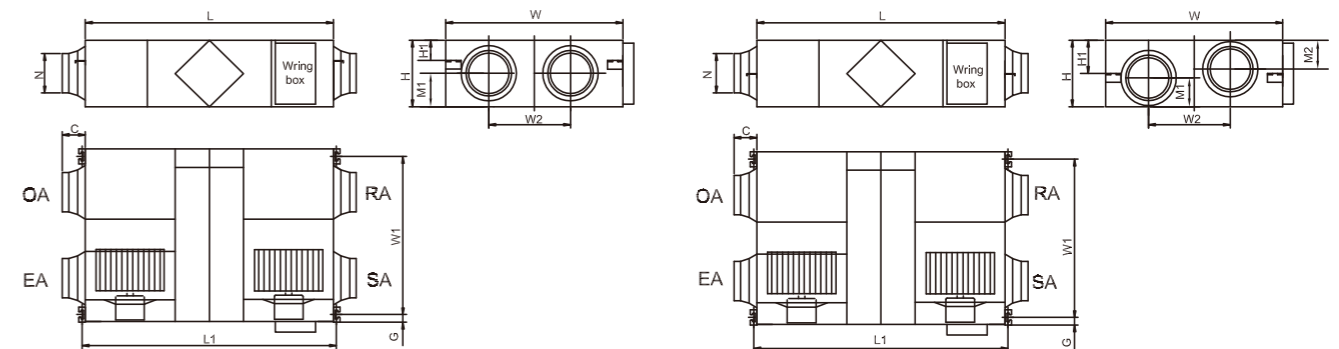
The 3rd generation enthalpy exchanger is made of the latest nanofiber structure to ensure higher efficiency. The heat exchange materials are mildew resistance and fire retardance.



## Specifications

Model	Fan Speed	Airflow (m <sup>3</sup> /h)	External pressure (Pa)	Enthalpy Eff.(%)		Temp. Eff. (%)	Noise dB(A)	Current (A)	Input power (W)	N. W. (Kg)
				Summer	Winter					
XHBQ-D6THC	L	500	89	63	67	76	29	0.96	200	34
	M	600	92	59	61	70	35			
	H	600	97	59	61	70	39			
XHBQ-D8THC	L	700	92	57	63	74	34	2	420	53
	M	800	96	55	57	68	39			
	H	800	100	55	57	68	41			
XHBQ-D10THC	L	900	80	60	64	76	34	2.1	450	61
	H	1000	86	58	62	70	42			
XHBQ-D13THC	L	1000	75	58	62	76	38	3.2	680	71
	M	1300	85	56	59	70	41			
	H	1300	90	56	59	70	43			

## Dimensions



XHBQ-D6THC-XHBQ-D8THC

XHBQ-D10THC-XHBQ-D13THC

Model	L	L1	W	W1	W2	H	H1	C	G	M1	M2	N
XHBQ-D6THC	867	922	902	833.5	451.5	280	115.5	107	26	139.5	/	Ø194
XHBQ-D8THC	1134	1189	884	818	378	388	128	85	26	194	/	Ø242
XHBQ-D10THC	1134	1189	1134	1068	628	388	128	85	26	194	/	Ø242
XHBQ-D13THC	1193	1248	1243	1173	629.5	388	133	85	26	139.5	241	Ø242

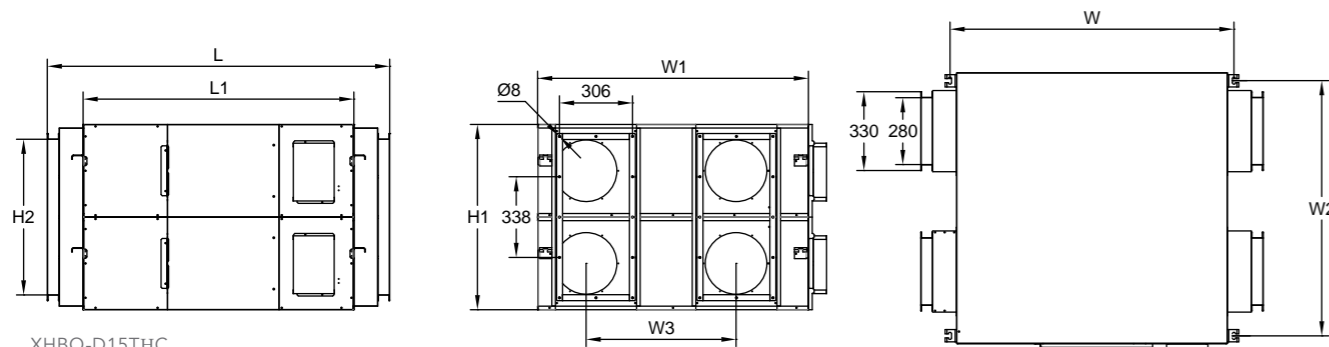


## Specifications



Model	Airflow (m³/h)	External pressure (Pa)	Enthalpy Eff.(%)		Temp. Eff. (%)	Noise dB(A)	Voltage (V)	Input power (W)	N. W. (Kg)
			Summer	Winter					
XHBQ-D15THC	1500	105	63-71	65-75	76-85	50	220-240	700	146
XHBQ-D20THC	2000	125	60-70	62-72	76-85	51.5	220-240	724	166
XHBQ-D26THC	2600	125	58-66	59-75	74-82	55	220-240	848	189

## Dimensions

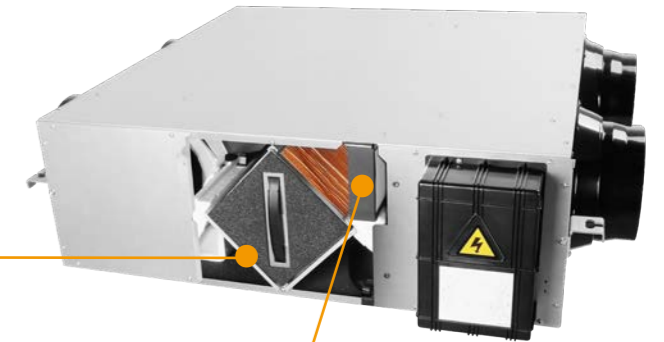


XHBQ-D15THC  
XHBQ-D20THC  
XHBQ-D26THC

Model	L	L1	W	W1	W2	W3	H1	H2
XHBQ-D15THC	1434	1134	1189	884	818	378	776	280
XHBQ-D20THC	1434	1134	1189	1134	1068	628	776	280
XHBQ-D26THC	1493	1193	1248	1243	1173	629.5	776	280

## Optional Filters

We also have optional filters for customers to use in different environment of air cleanness. If you need performance curves for different filters, please contact our sales team.



### Optional Fresh Air Filters:



Activated Carbon Primary Filter



F7 Filter

### Optional Supply Air Filters:



H10 Filter



H13 High Efficient Filter

## Air Filter Guide

### G3 / Activated Carbon Primary Filter MERV 6



Lasts up to 3 months



Ideal for home use



Traps **50%** of airborne particles

### F7 Filter MERV 11



Lasts up to 3 months



Ideal for home and business use



Traps **95%** of airborne particles

### F9 / H10 Filter MERV 13



Lasts up to 3 months



Ideal for home and business use



Traps **98%** of airborne particles

### H13 Filter MERV 16



Lasts up to 3 months



Ideal for home and business use



Traps **99.9%** of airborne particles



## Intelligent Controller

Intelligent control	 HDK-CK-20
Type	Black cool intelligent control
Temperature display	OA/RA/SA/FR temp.
10 speed	✓
Weekly timer	✓
Bypass	Auto
External ON/OFF	✓
Comfortable heater control	✓
Defrosting	✓
CO <sub>2</sub> control	✓
Filter alarm	✓
Fault alarm	✓
Data memory	✓
Night free cooling	✓
BMS integration	✓
Humidity control	✓
Defrosting heater control	✓
Working condition monitor	✓
Sleep mode	✓
Wifi function	✓



### ■ Monitoring indoor air quality

Monitor local weather, temperature, humidity, CO<sub>2</sub> concentration at your hand for healthy living.

### ■ Variable setting

Timely switch, speed settings, bypass/timer/filter alarm/temperature setting.

### ■ Optional language

Different language English/French/Italian/Spanish and so on to meet your requirement.

### ■ Group control

One APP can control multiple units.